

TM



Industrial Display Module

Innovation
Creates
Distinction

Main Features



Core solutions for the industrial field Rockchip&Qualcomm

Core solution RK3566 , RK3568 , RK3288 , RK3399 , RK3588 , Qualcomm MSM8909 , Snapdragon 450/665



Industrial-grade stable hardware Configuration

Quad-core & Octa-core ARM Cortex , support industrial and stable hardware configuration



Manufacturing Industrial-Grade Components

High reliability Durability test up to 72 hours , 12-month quality guarantee



Comprehensive Integrated LCD Display with multiple size

LCD screen size cover from 5 inch to 32 inch , Original LCD and touch screen providing stable pixel displaying and excellent touch feedback



Higher resolution, higher brightness LCD display

Higher brightness :
300nit/500nit/1000nit/1200nit
Resolution :
800 * 480 to 1920 * 1200



Rich configuration ports

UART , USB , RJ45 , CAN , GPIO optional Bluetooth and 4G , 5G GPS NPU module



Better LCD screen interface compatibility

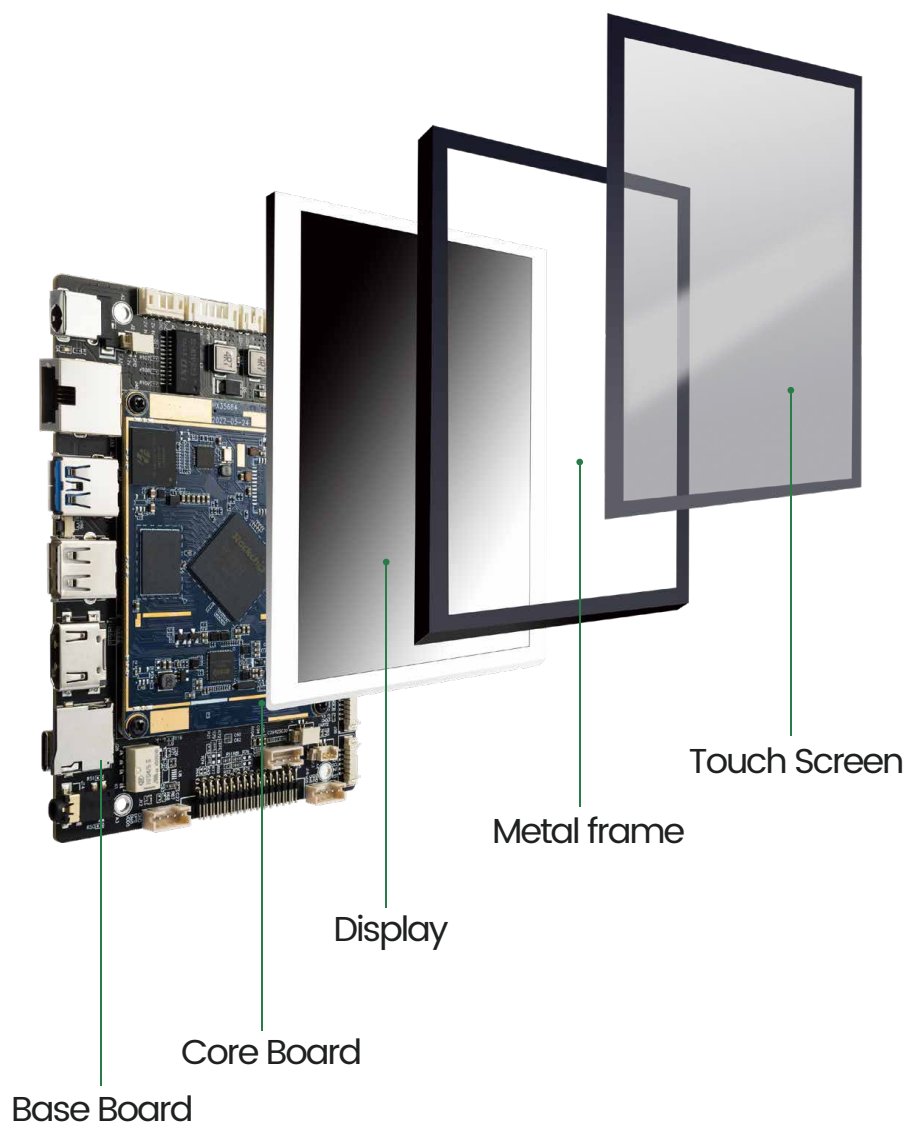
LVDS/MIPI/EDP/HDMI suitable different screen



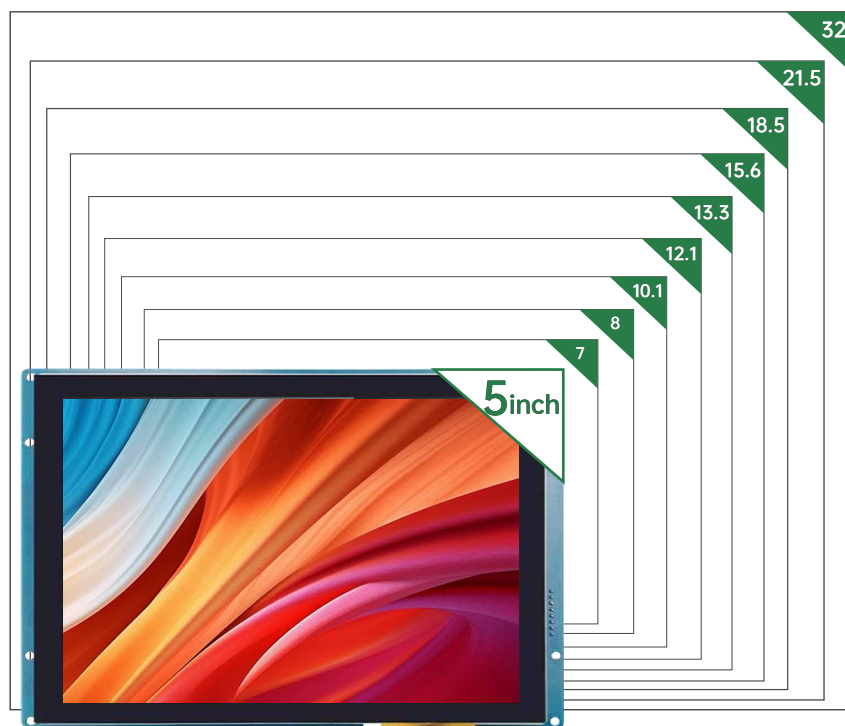
Structure design

Module integration and separation of two options

Composition Structure of LCD Module



Comprehensive Integrated LCD Display



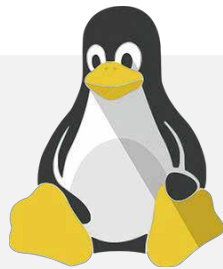
Covering Sizes from 5 to 32 inches

Operation System

Pre-installed with a secure and stable operating system

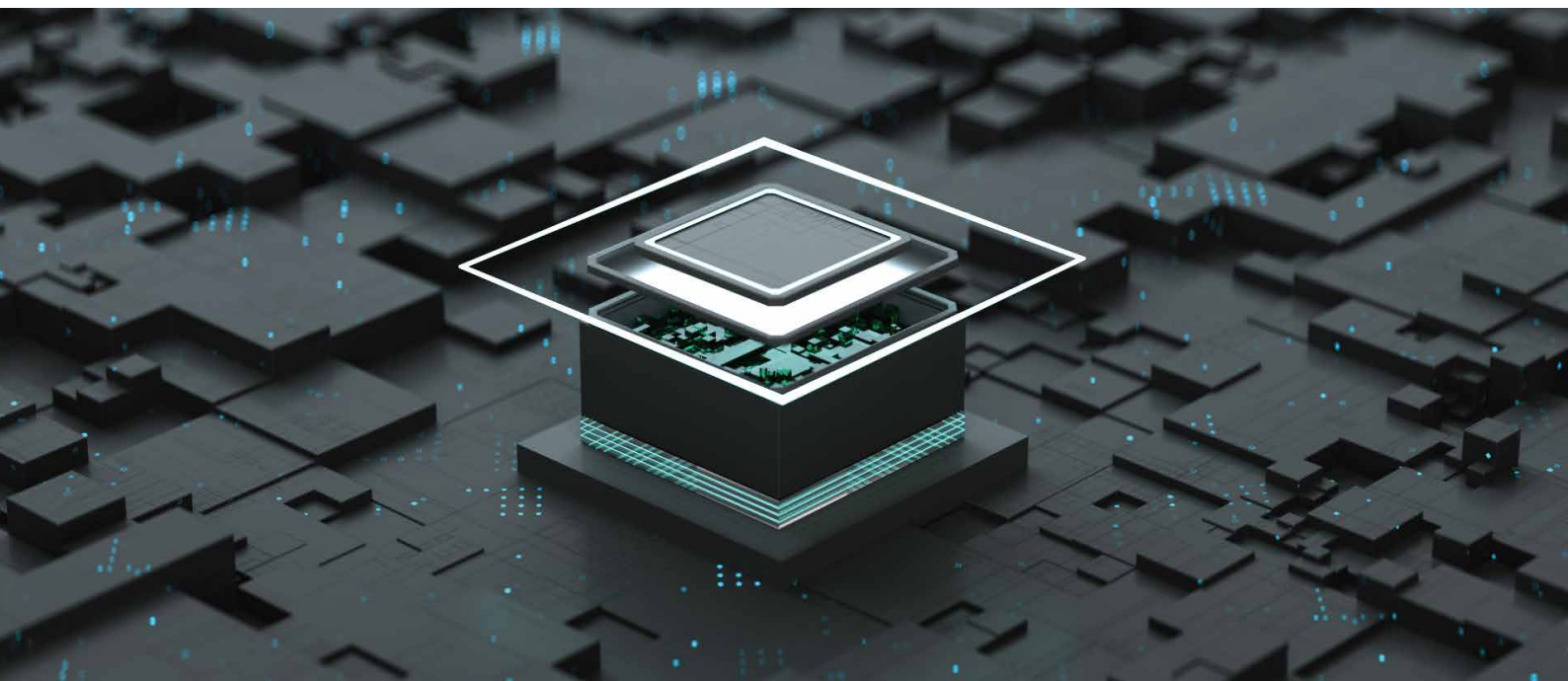


Android



Linux

Professional technical support



5 inch display module series



- Resolution: 1024x600/800x1280/1200x1920 optional
- High brightness options: 300nit/500nit/1000nit
- Module integration and separation of two options
- Rich configuration ports and Excellent Compatibility
- 12-month super-long warranty

Model No.	SOC	Resolution	System	Network	Storage	Uart	USB
MST80480L050	Rockchip RK3128 Quad-core ARM-A7@1.2GHz	800x480 RGB optional: 720x1280 MIPI	Android		1G+8G	UART0: 1*RS232/TTL UART1: 1*RS232/TTL UART_USB: RS485 (Optional: extend 1 way to 2 ways, extend 1 way to 4 ways)	2*USB HOST
MST72128X050	Rockchip RK3566 Quad-core ARM-A55@1.8GHz	720x1280 MIPI				UART5: 1*RS232/TTL UART6: 1*RS232/TTL UART_USB: RS485 (Optional: extend 1 way to 2 ways, extend 1 way to 4 ways)	
MST80480S050	Rockchip RK3288 Quad-core ARM-A17@1.8GHz	800x480 LVDS				UART1: 1*RS232 UART3: 1*TTL UART4: 1*TTL (Optional: extend 1 way to 2 ways, extend 1 way to 4 ways)	1*USB HOST
MST80480H050	Rockchip RK3399 Dual-core ARM-A72@1.8GHz Quad-core ARM-A53@1.4GHz	800x480 LVDS optional: 720x1280 MIPI	Android Linux	WiFi 802.11b/g/n LAN (optional) 4G (optional) GPS (optional)	2G+8G 2G+32G (optional) 4G+32G (optional) 4G+64G (optional)	UART4: 1*TTL (Optional: extend 1 way to 2 ways, extend 1 way to 4 ways)	2*USB HOST
MST72128H050							
MST72128E050	Rockchip RK3568 Quad-core ARM-A55@2.0GHz					UART4: 1*RS232 UART_USB: 1*RS485/RS232/TTL	3*USB HOST
MST72128T050	Rockchip RK3588 Quad-core ARM-A76@2.4GHz Quad-core ARM-A55@1.8GHz	720x1280 MIPI			4G+32G 4G+64G (optional) 8G+64G (optional) 16G+64G (optional)		
MST72128C050	Qualcomm MSM8909 Quad-core ARM-A7@1.1GHz (equate to RK3128)		Android		1G+8G 2G+16G (optional)		
MST72128Y050	Qualcomm snapdragon450 eight-core ARM-A53@1.8GHz (equate to RK3399)			WiFi 802.11b/g/n LAN (optional) 4G CAT4+GNSS (standard)	2G+16G	UART1: 1*RS232/TTL UART_USB: 1*RS485 (Optional: extend 1 way to 2 ways, extend 1 way to 4 ways)	2*USB HOST
MST72128F050	Qualcomm snapdragon665 Quad-core ARM-A73@2.0GHz Quad-core ARM-A53@1.8GHz				4G+64G		

7 inch display module series



- Resolution: 1024x600/800x1280/1200x1920 optional
- High brightness options: 300nit/500nit/1000nit
- Module integration and separation of two options
- Rich configuration ports and Excellent Compatibility
- 12-month super-long warranty

Model No.	SOC	Resolution	System	Network	Storage	Uart	USB
MSTI0600L070	Rockchip RK3128 Quad-core ARM-A7@1.2GHz	1024x600 LVDS optional: 800x1280 MIPI	Android	WiFi 802.11bgn LAN (standard) 4G (optional) GPS (optional)	1G+8G	UART0: 1*RS232/TTL UART1: 1*RS232/TTL UART_USB: RS485 <small>(Optional: extend 1 way to 2 ways, extend 1 way to 4 ways)</small>	2*USB HOST
MSTI0600X070	Rockchip RK3566 Quad-core ARM-A55@1.8GHz	1024x600 LVDS optional: 800x1280 MIPI optional: 1200x1920 MIPI	Android Linux		2G+8G 2G+32G (optional) 4G+32G (optional) 4G+64G (optional)	UART5: 1*RS232/TTL UART6: 1*RS232/TTL UART_USB: 1*RS485 <small>(Optional: extend 1 way to 2 ways, extend 1 way to 4 ways)</small>	
MSTI0600S070	Rockchip RK3288 Quad-core ARM-A17@1.8GHz	1024x600 LVDS			2G+8G 2G+32G (optional)	UART1: 1*RS232/TTL UART3: 1*RS232 UART4: 1*RS232/TTL UART_USB: 1*RS485 <small>(Optional: extend 1 way to 2 ways, extend 1 way to 4 ways)</small>	3*USB HOST
MSTI0600E070	Rockchip RK3568 Quad-core ARM-A55@2.0GHz	1024x600 LVDS optional: 800x1280 MIPI optional: 1200x1920 MIPI			2G+8G 2G+32G (optional) 4G+32G (optional) 4G+64G (optional)	UART4: 1*RS232/TTL UART_USB: 1*RS485 <small>(Optional: extend 1 way to 2 ways, extend 1 way to 4 ways)</small>	4*USB HOST (including 1*USB3.0)
MSTI0600H070	Rockchip RK3399 Dual-core ARM-A72@1.8GHz Quad-core ARM-A53@1.4GHz				2G+8G 4G+32G (optional) 4G+64G (optional)		
MSTI0600T070	Rockchip RK3588 Quad-core ARM-A76@2.4GHz Quad-core ARM-A55@1.8GHz				4G+32G 4G+64G (optional) 8G+64G (optional) 16G+64G (optional)	UART0: 1*RS232/TTL UART_USB: 1*RS485 <small>(Optional: extend 1 way to 2 ways, extend 1 way to 4 ways)</small>	3*USB HOST
MSTI0600C070	Qualcomm MSM8909 Quad-core ARM-A7@1.1GHz (equate to RK3128)	1024x600 MIPI optional: 800x1280 MIPI	Android		WiFi 802.11b/g/n LAN (optional) 4G CAT4+GNSS (standard)	1G+8G 2G+16G (optional)	UART1: 1*RS232/TTL UART_USB: 1*RS485 <small>(Optional: extend 1 way to 2 ways, extend 1 way to 4 ways)</small>
MSTI0600Y070	Qualcomm snapdragon450 eight-core ARM-A53@1.8GHz (equate to RK3399)		WiFi 802.11bgn LAN (standard) 4G CAT4+GNSS (standard)	2G+16G			
MSTI0600F070	Qualcomm snapdragon665 Quad-core ARM-A73@2.0GHz Quad-core ARM-A53@1.8GHz	1024x600 MIPI optional: 800x1280 MIPI optional: 1200x1920 MIPI	WiFi 802.11bgn/ac LAN (standard) 4G CAT4+GNSS (standard)	4G+64G			

8 inch display module series



- Resolution: 800x1280/1200x1920/1024x768 optional
- High brightness options: 300nit/500nit/1000nit
- Module integration and separation of two options
- Rich configuration ports and Excellent Compatibility
- 12-month super-long warranty

Model No.	SOC	Resolution	System	Network	Storage	Uart	USB	
MST10768L080	Rockchip RK3128 Quad-core ARM-A7@1.2GHz	1024x768 LVDS	Android	WiFi 802.11bgn LAN (standard) 4G (optional) GPS (optional)	1G+8G	UART0: 1*RS232/TTL UART1: 1*RS232/TTL UART USB: RS485 (Optional: extend 1 way to 2 ways, extend 1 way to 4 ways)	2*USB HOST	
MST10768X080	Rockchip RK3566 Quad-core ARM-A55@1.8GHz		2G+8G 2G+32G (optional) 4G+32G (optional) 4G+64G (optional)		UART5: 1*RS232/TTL UART6: 1*RS232/TTL UART USB: 1*RS485 (Optional: extend 1 way to 2 ways, extend 1 way to 4 ways)			
MST10768S080	Rockchip RK3288 Quad-core ARM-A17@1.8GHz		2G+8G 2G+32G (optional)		UART1: 1*RS232/TTL UART3: 1*RS232 UART4: 1*RS232/TTL UART USB: 1*RS485 (Optional: extend 1 way to 2 ways, extend 1 way to 4 ways)	3*USB HOST		
MST10768E080	Rockchip RK3568 Quad-core ARM-A55@2.0GHz		2G+8G 2G+32G (optional) 4G+32G (optional) 4G+64G (optional)		Android Linux	WiFi 802.11bgn LAN (optional) 4G (optional) GPS (optional)	UART4: 1*RS232/TTL UART USB: 1*RS485 (Optional: extend 1 way to 2 ways, extend 1 way to 4 ways)	4*USB HOST (including 1*USB3.0)
MST10768H080	Rockchip RK3399 Dual-core ARM-A72@1.8GHz Quad-core ARM-A53@1.4GHz		2G+8G 4G+32G (optional) 4G+64G (optional)					
MST10768T080	Rockchip RK3588 Quad-core ARM-A76@2.4GHz Quad-core ARM-A55@1.8GHz		4G+32G 4G+64G (optional) 8G+64G (optional) 16G+64G (optional)					
MST80128L080	Rockchip RK3128 Quad-core ARM-A7@1.2GHz		800x1280 MIPI		Android	WiFi 802.11bgn LAN (standard) 4G (optional) GPS (optional)	1G+8G	UART0: 1*RS232/TTL UART1: 1*RS232/TTL UART USB: 1*RS485 (Optional: extend 1 way to 2 ways, extend 1 way to 4 ways)
MST80128X080	Rockchip RK3566 Quad-core ARM-A55@1.8GHz	800x1280 MIPI optional: 1200x1920 MIPI	Android Linux	2G+8G 2G+32G (optional) 4G+32G (optional) 4G+64G (optional)	UART5: 1*RS232/TTL UART6: 1*RS232/TTL UART USB: 1*RS485 (Optional: extend 1 way to 2 ways, extend 1 way to 4 ways)			
MST80128C080	Qualcomm MSM8909 Quad-core ARM-A7@1.1GHz (equate to RK3128)	800x1280 MIPI	Android	WiFi 802.11b/g/n LAN (standard) 4G CAT4+GNSS (standard)	1G+8G 2G+16G (optional)	UART1: 1*RS232/TTL UART USB: 1*RS485 (Optional: extend 1 way to 2 ways, extend 1 way to 4 ways)	2*USB HOST	
MST80128Y080	Qualcomm snapdragon450 eight-core ARM-A53@1.8GHz (equate to RK3399)	800x1280 MIPI optional: 1200x1920 MIPI			2G+16G			
MST80128F080	Qualcomm snapdragon665 Quad-core ARM-A73@2.0GHz Quad-core ARM-A53@1.8GHz	4G+64G						

10.1 inch display module series



- Resolution: 1024x600/1280x800/800x1280/1200x1920 optional
- High brightness options: 300nit/500nit/1000nit
- Module integration and separation of two options
- Rich configuration ports and Excellent Compatibility
- 12-month super-long warranty

Model No.	SOC	Resolution	System	Network	Storage	Uart	USB	
MST10600L101	Rockchip RK3128 Quad-core ARM-A7@1.2GHz	1024x600 LVDS	Android	Wifi 802.11bgn LAN (standard) 4G (optional) GPS (optional)	1G+8G	UART0: 1*RS232/TTL UART1: 1*RS232/TTL UART_USB: 1*RS485 <small>(Optional: extend 1 way to 2 ways, extend 1 way to 4 ways)</small>	2*USB HOST	
MST10600X101	Rockchip RK3566 Quad-core ARM-A55@1.8GHz				2G+8G 2G+32G (optional) 4G+32G (optional) 4G+64G (optional)	UART5: 1*RS232/TTL UART6: 1*RS232/TTL UART_USB: 1*RS485 <small>(Optional: extend 1 way to 2 ways, extend 1 way to 4 ways)</small>		
MST10600S101	Rockchip RK3288 Quad-core ARM-A17@1.8GHz		Android Linux		2G+8G 2G+32G (optional)	UART1: 1*RS232/TTL UART3: 1*RS232 UART4: 1*RS232/TTL UART_USB: 1*RS485 <small>(Optional: extend 1 way to 2 ways, extend 1 way to 4 ways)</small>	3*USB HOST	
MST10600E101	Rockchip RK3568 Quad-core ARM-A55@2.0GHz				2G+8G 2G+32G (optional) 4G+32G (optional) 4G+64G (optional)	UART4: 1*RS232/TTL UART_USB: 1*RS485 <small>(Optional: extend 1 way to 2 ways, extend 1 way to 4 ways)</small>		4*USB HOST (including 1*USB3.0)
MST10600H101	Rockchip RK3399 Dual-core ARM-A72@1.8GHz Quad-core ARM-A53@1.4GHz				2G+8G 4G+32G (optional) 4G+64G (optional)			
MST10600T101	Rockchip RK3588 Quad-core ARM-A76@2.4GHz Quad-core ARM-A55@1.8GHz				4G+32G 4G+64G (optional) 8G+64G (optional) 16G+64G (optional)	UART0: 1*RS232/TTL UART_USB: 1*RS485 <small>(Optional: extend 1 way to 2 ways, extend 1 way to 4 ways)</small>		2*USB
MST12800S101	Rockchip RK3288 Quad-core ARM-A17@1.8GHz	1280x800 LVDS	Android	Wifi 802.11bgn LAN (standard) 4G (optional) GPS (optional)	2G+8G 2G+32G (optional)	UART1: 1*RS232/TTL UART3: 1*RS232 UART4: 1*RS232/TTL UART_USB: 1*RS485 <small>(Optional: extend 1 way to 2 ways, extend 1 way to 4 ways)</small>	3*USB HOST	
MST12800E101	Rockchip RK3568 Quad-core ARM-A55@2.0GHz				2G+8G 2G+32G (optional) 4G+32G (optional) 4G+64G (optional)	UART4: 1*RS232/TTL UART_USB: 1*RS485 <small>(Optional: extend 1 way to 2 ways, extend 1 way to 4 ways)</small>		4*USB HOST (including 1*USB 3.0)
MST12800H101	Rockchip RK3399 Dual-core ARM-A72@1.8GHz Quad-core ARM-A53@1.4GHz		2G+8G 4G+32G (optional) 4G+64G (optional)					
MST12800T101	Rockchip RK3588 Quad-core ARM-A76@2.4GHz Quad-core ARM-A55@1.8GHz		4G+32G 4G+64G (optional) 8G+64G (optional) 16G+64G (optional)		UART0: 1*RS232/TTL UART_USB: 1*RS485 <small>(Optional: extend 1 way to 2 ways, extend 1 way to 4 ways)</small>	2*USB HOST		
MST80128L101	Rockchip RK3128 Quad-core ARM-A7@1.2GHz	800x1280 MIPI	Android		Wifi 802.11bgn/ac LAN (standard) 4G CAT4+GNSS (standard)	1G+8G	UART0: 1*RS232/TTL UART1: 1*RS232/TTL UART_USB: 1*RS485 <small>(Optional: extend 1 way to 2 ways, extend 1 way to 4 ways)</small>	2*USB
MST80128X101	Rockchip RK3566 Quad-core ARM-A55@1.8GHz	800x1280 MIPI optional: 1200x1920 MIPI				Android linux	1G+8G 2G+8G (optional) 2G+32G (optional)	
MST80128C101	Qualcomm MSM8909 Quad-core ARM-A7@1.1GHz (equate to RK3128)	800x1280 MIPI	1G+8G 2G+16G (optional)	UART1: 1*RS232/TTL UART_USB: 1*RS485 <small>(Optional: extend 1 way to 2 ways, extend 1 way to 4 ways)</small>			2*USB HOST	
MST80128Y101	Qualcomm snapdragon450 eight-core ARM-A53@1.8GHz (equate to RK3399)	800x1280 MIPI optional: 1200x1920 MIPI	2G+16G					
MST80128F101	Qualcomm snapdragon665 Quad-core ARM-A73@2.0GHz Quad-core ARM-A53@1.8GHz		4G+64G					

12.1 inch display module series



- Resolution: 1280x800
- High brightness options: 300nit/500nit/1000nit
- Module integration and separation of two options
- Rich configuration ports and Excellent Compatibility
- 12-month super-long warranty

Model No.	SOC	Resolution	System	Network	Storage	Uart	USB
MST12800S121	Rockchip RK3288 Quad-core ARM-A17@1.8GHz	1280x800 LVDS	Android Linux	WiFi 802.11bgn LAN (standard) 4G (optional) GPS (optional)	2G+8G 2G+32G (optional)	UART1: 1*RS232/TTL UART3: 1*RS232 UART4: 1*RS232/TTL UART_USB: 1*RS485 (Optional: extend 1 way to 2 ways, extend 1 way to 4 ways)	3*USB HOST
MST12800X121	Rockchip RK3566 Quad-core ARM-A55@1.8GHz				2G+8G 2G+32G (optional) 4G+32G (optional) 4G+64G (optional)	UART5: 1*RS232 UART6: 1*TTL UART9: 1*TTL UART_USB: 1*RS485 (Optional: extend 1 way to 2 ways, extend 1 way to 4 ways)	3*USB HOST (including 1*USB3.0)
MST12800E121	Rockchip RK3568 Quad-core ARM-A55@2.0GHz				UART4: 1*RS232/TTL UART_USB: 1*RS485 (Optional: extend 1 way to 2 ways, extend 1 way to 4 ways)	4*USB HOST (including 1*USB3.0)	
MST12800H121	Rockchip RK3399 Dual-core ARM-A72@1.8GHz Quad-core ARM-A53@1.4GHz				2G+8G 4G+32G (optional) 4G+64G (optional)		
MST12800T121	Rockchip RK3588 Quad-core ARM-A76@2.4GHz Quad-core ARM-A55@1.8GHz				4G+32G 4G+64G (optional) 8G+64G (optional) 16G+64G (optional)	UART0: 1*RS232/TTL UART_USB: 1*RS485 (Optional: extend 1 way to 2 ways, extend 1 way to 4 ways)	2*USB HOST

13.3 inch display module series



- Resolution: 1920x1080
- High brightness options: 300nit/500nit/1000nit
- Module integration and separation of two options
- Rich configuration ports and Excellent Compatibility
- 12-month super-long warranty

Model No.	SOC	Resolution	System	Network	Storage	Uart	USB
MST191080S133	Rockchip RK3288 Quad-core ARM-A17@1.8GHz	1280x800 LVDS	Android Linux	WiFi 802.11bgn LAN (standard) 4G (optional) GPS (optional)	2G+8G 2G+32G (optional)	UART1: 1*RS232/TTL UART3: 1*RS232 UART4: 1*RS232/TTL UART_USB: 1*RS485 (Optional: extend 1 way to 2 ways, extend 1 way to 4 ways)	3*USB HOST
MST191080X133	Rockchip RK3566 Quad-core ARM-A55@1.8GHz				2G+8G 2G+32G (optional) 4G+32G (optional)	UART5: 1*RS232 UART6: 1*TTL UART9: 1*TTL UART_USB: 1*RS485 (Optional: extend 1 way to 2 ways, extend 1 way to 4 ways)	3*USB HOST (including 1*USB3.0)
MST191080E133	Rockchip RK3568 Quad-core ARM-A55@2.0GHz			WiFi 802.11bgn, CAN, LAN (standard) 4G (optional) GPS (optional)	4G+64G (optional) 8G+64G (optional)	UART4: 1*RS232/TTL UART_USB: 1*RS485 (Optional: extend 1 way to 2 ways, extend 1 way to 4 ways)	4*USB HOST (including 1*USB3.0)
MST191080H133	Rockchip RK3399 Dual-core ARM-A72@1.8GHz Quad-core ARM-A53@1.4GHz			WiFi 802.11bgn LAN (standard) 4G (optional) GPS (optional)	2G+8G 4G+32G (optional) 4G+64G (optional)		
MST191080T133	Rockchip RK3588 Quad-core ARM-A76@2.4GHz Quad-core ARM-A55@1.8GHz			WiFi 802.11bgn LAN (optional) 4G (optional) GPS (optional)	4G+32G (optional) 8G+64G (optional) 16G+64G (optional)	UART0: 1*RS232/TTL UART_USB: 1*RS485 (Optional: extend 1 way to 2 ways, extend 1 way to 4 ways)	2*USB HOST

15 inch display module series



- Resolution: 1024x768
- High brightness options: 300nit/500nit/1000nit
- Module integration and separation of two options
- Rich configuration ports and Excellent Compatibility
- 12-month super-long warranty

Model No.	SOC	Resolution	System	Network	Storage	Uart	USB
MSTI0768SI50	Rockchip RK3288 Quad-core ARM-A17@1.8GHz	1024x768 LVDS	Android Linux	WiFi 802.11bgn LAN (standard) 4G (optional) GPS (optional)	2G+8G 2G+32G (optional)	UART1: 1*RS232/TTL UART3: 1*RS232 UART4: 1*RS232/TTL UART_USB: 1*RS485 (Optional: extend 1 way to 2 ways, extend 1 way to 4 ways)	3*USB HOST
MSTI0768EI50	Rockchip RK3568 Quad-core ARM-A55@2.0GHz			WiFi 802.11bgn, CAN, LAN (standard) 4G (optional) GPS (optional)	2G+8G 2G+32G (optional) 4G+32G (optional) 4G+64G (optional)	UART4: 1*RS232/TTL UART_USB: 1*RS485 (Optional: extend 1 way to 2 ways, extend 1 way to 4 ways)	4*USB HOST (including 1*USB3.0)
MSTI0768HI50	Rockchip RK3399 Dual-core ARM-A72@1.8GHz Quad-core ARM-A53@1.4GHz			WiFi 802.11bgn LAN (standard) 4G (optional) GPS (optional)	2G+8G 4G+32G (optional) 4G+64G (optional)		
MSTI0768TI50	Rockchip RK3588 Quad-core ARM-A76@2.4GHz Quad-core ARM-A55@1.8GHz			WiFi 802.11bgn LAN (optional) 4G (optional) GPS (optional)	4G+32G 4G+64G (optional) 8G+64G (optional) 16G+64G (optional)	UART4: 1*RS232/TTL UART_USB: 1*RS485 (Optional: extend 1 way to 2 ways, extend 1 way to 4 ways)	2*USB HOST

15.6 inch display module series



- Resolution: 1920x1080
- High brightness options: 300nit/500nit/1000nit
- Module integration and separation of two options
- Rich configuration ports and Excellent Compatibility
- 12-month super-long warranty

Model No.	SOC	Resolution	System	Network	Storage	Uart	USB
MST191080S156	Rockchip RK3288 Quad-core ARM-A17@1.8GHz	1920x1080 eDP	Android Linux	WiFi 802.11bgn LAN (standard) 4G (optional) GPS (optional)	2G+8G 2G+32G (optional)	UART1: 1*RS232/TTL UART3: 1*RS232 UART4: 1*RS232/TTL UART_USB: 1*RS485 (Optional: extend 1 way to 2 ways, extend 1 way to 4 ways)	3*USB HOST
MST191080X156	Rockchip RK3566 Quad-core ARM-A55@1.8GHz				2G+8G 2G+32G (optional) 4G+32G (optional) 4G+64G (optional) 8G+64G (optional)	UART5: 1*RS232 UART6: 1*TTL UART9: 1*TTL UART_USB: 1*RS485 (Optional: extend 1 way to 2 ways, extend 1 way to 4 ways)	3*USB HOST (including 1*USB3.0)
MST191080E156	Rockchip RK3568 Quad-core ARM-A55@2.0GHz			WiFi 802.11bgn, CAN, LAN (standard) 4G (optional) GPS (optional)	UART4: 1*RS232/TTL UART_USB: 1*RS485 (Optional: extend 1 way to 2 ways, extend 1 way to 4 ways)	4*USB HOST (including 1*USB3.0)	
MST191080H156	Rockchip RK3399 Dual-core ARM-A72@1.8GHz Quad-core ARM-A53@1.4GHz			WiFi 802.11bgn LAN (standard) 4G (optional) GPS (optional)	2G+8G 4G+32G (optional) 4G+64G (optional)		
MST191080T156	Rockchip RK3588 Quad-core ARM-A76@2.4GHz Quad-core ARM-A55@1.8GHz			WiFi 802.11bgn LAN (optional) 4G (optional) GPS (optional)	4G+32G 4G+64G (optional) 8G+64G (optional) 16G+64G (optional)	UART0: 1*RS232/TTL UART_USB: 1*RS485 (Optional: extend 1 way to 2 ways, extend 1 way to 4 ways)	2*USB HOST

18.5 inch display module series



- Resolution: 1366x768/1920x1080 optional
- High brightness options: 300nit/500nit/1000nit
- Module integration and separation of two options
- Rich configuration ports and Excellent Compatibility
- 12-month super-long warranty

Model No.	SOC	Resolution	System	Network	Storage	Uart	USB
MST13768S185	Rockchip RK3288 Quad-core ARM-A17@1.8GHz	1366x768 LVDS optional: 1920x1080 LVDS	Android Linux	WiFi 802.11bgn LAN (standard) 4G (optional) GPS (optional)	2G+8G 2G+32G (optional)	UART1: 1*RS232/TTL UART3: 1*RS232 UART4: 1*RS232/TTL UART_USB: 1*RS485 (Optional: extend 1 way to 2 ways, extend 1 way to 4 ways)	3*USB HOST
MST13768E185	Rockchip RK3568 Quad-core ARM-A55@2.0GHz			WiFi 802.11bgn, CAN, LAN (standard) 4G (optional) GPS (optional)	2G+8G 2G+32G (optional) 4G+32G (optional) 4G+64G (optional)	UART4: 1*RS232/TTL UART_USB: 1*RS485 (Optional: extend 1 way to 2 ways, extend 1 way to 4 ways)	4*USB HOST (including 1*USB3.0)
MST13768H185	Rockchip RK3399 Dual-core ARM-A72@1.8GHz Quad-core ARM-A53@1.4GHz			WiFi 802.11bgn LAN (standard) 4G (optional) GPS (optional)	2G+8G 4G+32G (optional) 4G+64G (optional)		
MST13768T185	Rockchip RK3588 Quad-core ARM-A76@2.4GHz Quad-core ARM-A55@1.8GHz			WiFi 802.11bgn LAN (optional) 4G (optional) GPS (optional)	4G+32G 4G+64G (optional) 8G+64G (optional) 16G+64G (optional)	UART4: 1*RS232/TTL UART_USB: 1*RS485 (Optional: extend 1 way to 2 ways, extend 1 way to 4 ways)	2*USB HOST

21.5 inch display module series



- Resolution: 1920x1080
- High brightness options: 300nit/500nit/1000nit
- Module integration and separation of two options
- Rich configuration ports and Excellent Compatibility
- 12-month super-long warranty

Model No.	SOC	Resolution	System	Network	Storage	Uart	USB
MST19108S215	Rockchip RK3288 Quad-core ARM-A17@1.8GHz	1920x1080 LVDS	Android Linux	WiFi 802.11bgn LAN (standard) 4G (optional) GPS (optional)	2G+8G 2G+32G (optional)	UART1: 1*RS232/TTL UART3: 1*RS232 UART4: 1*RS232/TTL UART_USB: 1*RS485 (Optional: extend 1 way to 2 ways, extend 1 way to 4 ways)	3*USB HOST
MST19108E215	Rockchip RK3568 Quad-core ARM-A55@2.0GHz			WiFi 802.11bgn, CAN, LAN (standard) 4G (optional) GPS (optional)	2G+8G 2G+32G (optional) 4G+32G (optional) 4G+64G (optional)	UART4: 1*RS232/TTL UART_USB: 1*RS485 (Optional: extend 1 way to 2 ways, extend 1 way to 4 ways)	4*USB HOST (including 1*USB3.0)
MST19108H215	Rockchip RK3399 Dual-core ARM-A72@1.8GHz Quad-core ARM-A53@1.4GHz			WiFi 802.11bgn LAN (standard) 4G (optional) GPS (optional)	2G+8G 4G+32G (optional) 4G+64G (optional)		
MST19108T215	Rockchip RK3588 Quad-core ARM-A76@2.4GHz Quad-core ARM-A55@1.8GHz			WiFi 802.11bgn LAN (optional) 4G (optional) GPS (optional)	4G+32G 4G+64G (optional) 8G+64G (optional) 16G+64G (optional)	UART4: 1*RS232/TTL UART_USB: 1*RS485 (Optional: extend 1 way to 2 ways, extend 1 way to 4 ways)	2*USB HOST

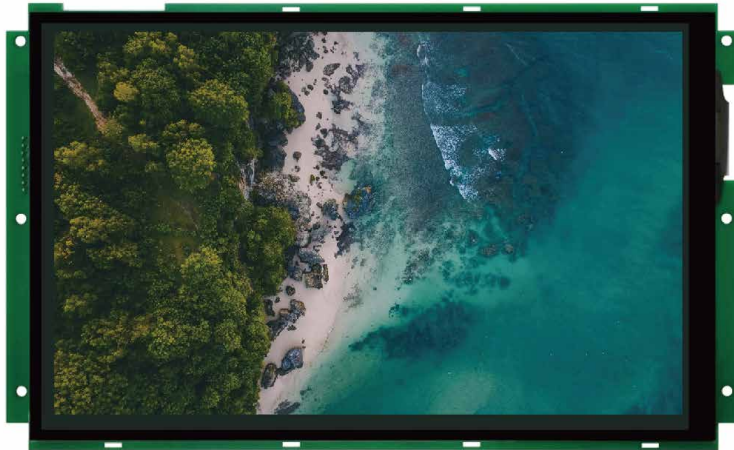
32 inch display module series



- Resolution: 1920x1080
- High brightness options: 300nit/500nit/1000nit
- Module integration and separation of two options
- Rich configuration ports and Excellent Compatibility
- 12-month super-long warranty

Model No.	SOC	Resolution	System	Network	Storage	Uart	USB
MST19108S320	Rockchip RK3288 Quad-core ARM-A17@1.8GHz	1920x1080 LVDS	Android Linux	WiFi 802.11bgn LAN (standard) 4G (optional) GPS (optional)	2G+8G 2G+32G (optional)	UART1: 1*RS232/TTL UART3: 1*RS232 UART4: 1*RS232/TTL UART_USB: 1*RS485 (Optional: extend 1 way to 2 ways, extend 1 way to 4 ways)	3*USB HOST
MST19108E320	Rockchip RK3568 Quad-core ARM-A55@2.0GHz			WiFi 802.11bgn, CAN, LAN (standard) 4G (optional) GPS (optional)	2G+8G 2G+32G (optional) 4G+32G (optional) 4G+64G (optional)	UART4: 1*RS232/TTL UART_USB: 1*RS485 (Optional: extend 1 way to 2 ways, extend 1 way to 4 ways)	4*USB HOST (including 1*USB3.0)
MST19108H320	Rockchip RK3399 Dual-core ARM-A72@1.8GHz Quad-core ARM-A53@1.4GHz			WiFi 802.11bgn LAN (standard) 4G (optional) GPS (optional)	2G+8G 4G+32G (optional) 4G+64G (optional)		
MST19108T320	Rockchip RK3588 Quad-core ARM-A76@2.4GHz Quad-core ARM-A55@1.8GHz			WiFi 802.11bgn LAN (optional) 4G (optional) GPS (optional)	4G+32G 4G+64G (optional) 8G+64G (optional) 16G+64G (optional)	UART4: 1*RS232/TTL UART_USB: 1*RS485 (Optional: extend 1 way to 2 ways, extend 1 way to 4 ways)	2*USB HOST

One-Stop Solution



Cellphone: 5103352701

Email : info@reliova.com
